

## Spring-return damper actuator, 10 Nm

# SR10

### Description

Damper actuator serie SR10 to operate and position air dampers in HVAC systems.

- For air dampers up to approx. 2 m<sup>2</sup>
- Nominal voltage 24 Vac/dc and 230 Vac
- Control: 2-point, on-off and proportional
- Characteristics: universal spindle clamp for easy direct mounting, shaft dimensions Ø 10 to 21 mm round / □ 6 to 15 mm square, minimum shaft length 80 mm, anti-rotation bracket provided for stability, selectable direction of rotation, adjustable angle of rotation, 1 m cable connection.



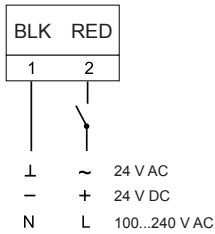
### Technical features

Actuator model		SR10A	SR10AM	SR10B
Damper area	m <sup>2</sup>		2	
Nominal torque	Nm		10	
Power supply	V	24 AC/DC	24 AC/DC	100...240 AC
Frequency	Hz		50/60	
Power consumption				
- in operation	W	5.0	5.0	6.5
- at rest	W		2.5	
- for wire sizing	VA		10.0	
Running time for motor	s		60...100	
Running time for spring	s		25	
Sound power level	db (A)		50 (motor), 62 (spring)	
Control signal		2 point, on-off	0...10 V DC	2 point, on-off
Auxiliary switch rating			3 (1,5) A, AC 250 V	
Life Cycle	cycles		60.000	
Rotation angle				
- operating			0-90°	
- limitation			5-85° (steps of 5°)	
Protection class		III	III	II
Protection degree			IP54	
Working range °C			-20...+50° C	
Working range RH			5...95% RH, non-condensating	
Storage temperature			-30...+80° C	
Manual override		by means of hand crank and locking switch (only ON-OFF models)		
Maintenance			free	
Weight	g		2300	
Standards		CE-conformity, RoHs		
Option		suffix S for models with 2 SPDT auxiliary switches		

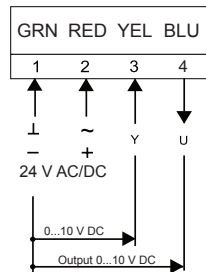


## Electrical wirings

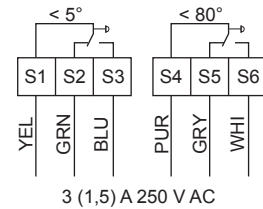
Wiring diagram, On-Off



Wiring diagram, Proportional

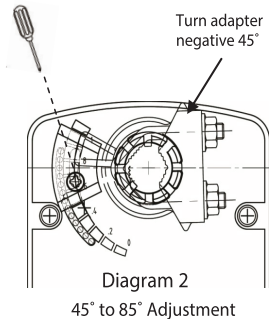
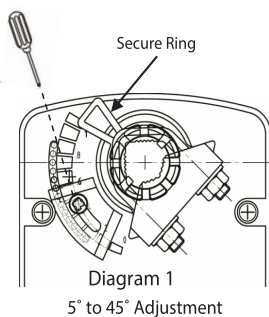


Auxiliary switches



## Settings

Limitation of rotation angle from 5° to 85°



For 5° to 45° (diagram 1)

1. Loosen screw of the mechanical limiter plate.
2. Move the limiter plate to the appropriate position.
3. Tighten the screw.

For 45° to 85° (diagram 2)

1. Release the secure ring of the adapter.
2. Remove the adapter and turn negative 45° as shown.
3. Insert adapter and secure the adapter ring.
4. Loosen screw of the mechanical limiter plate.
5. Move the limiter plate to the appropriate position.
6. Tighten the screw.

**Manual override:** By using the hand crank the damper can be actuated manually and engaged with the locking switch at any position. Unlocking is carried out manually or automatically by applying the operating voltage.

## Dimensions (mm)

